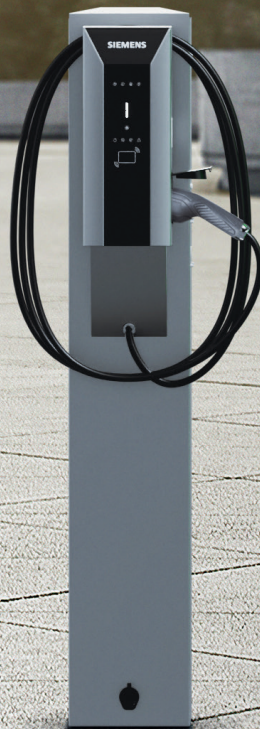


VERSICHARGE AC CHARGING SYSTEMS

Simply **charge** **everywhere**

[siemens.com/versicharge](https://www.siemens.com/versicharge)



SIEMENS

Simply charge everywhere – with VersiCharge



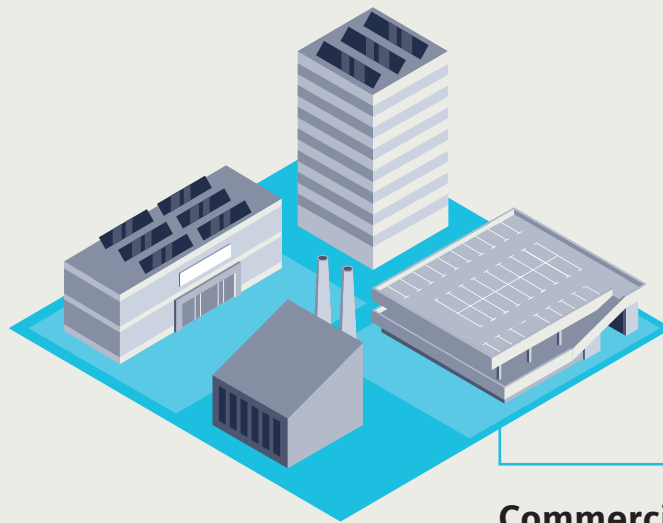
The ideal charging station for your application

The VersiCharge portfolio includes versions for public and semi-public applications .

There are options and functions specifically designed for commercial demands: for example, there's the option to incorporate an LTE modem for connecting to cellular networks. VersiCharge provides a scalable charging range up to 22 kW, and to save space they can be wall- or pole-mounted in locations like parking areas.

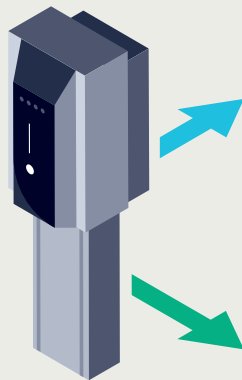


Versatility for everyone, everywhere

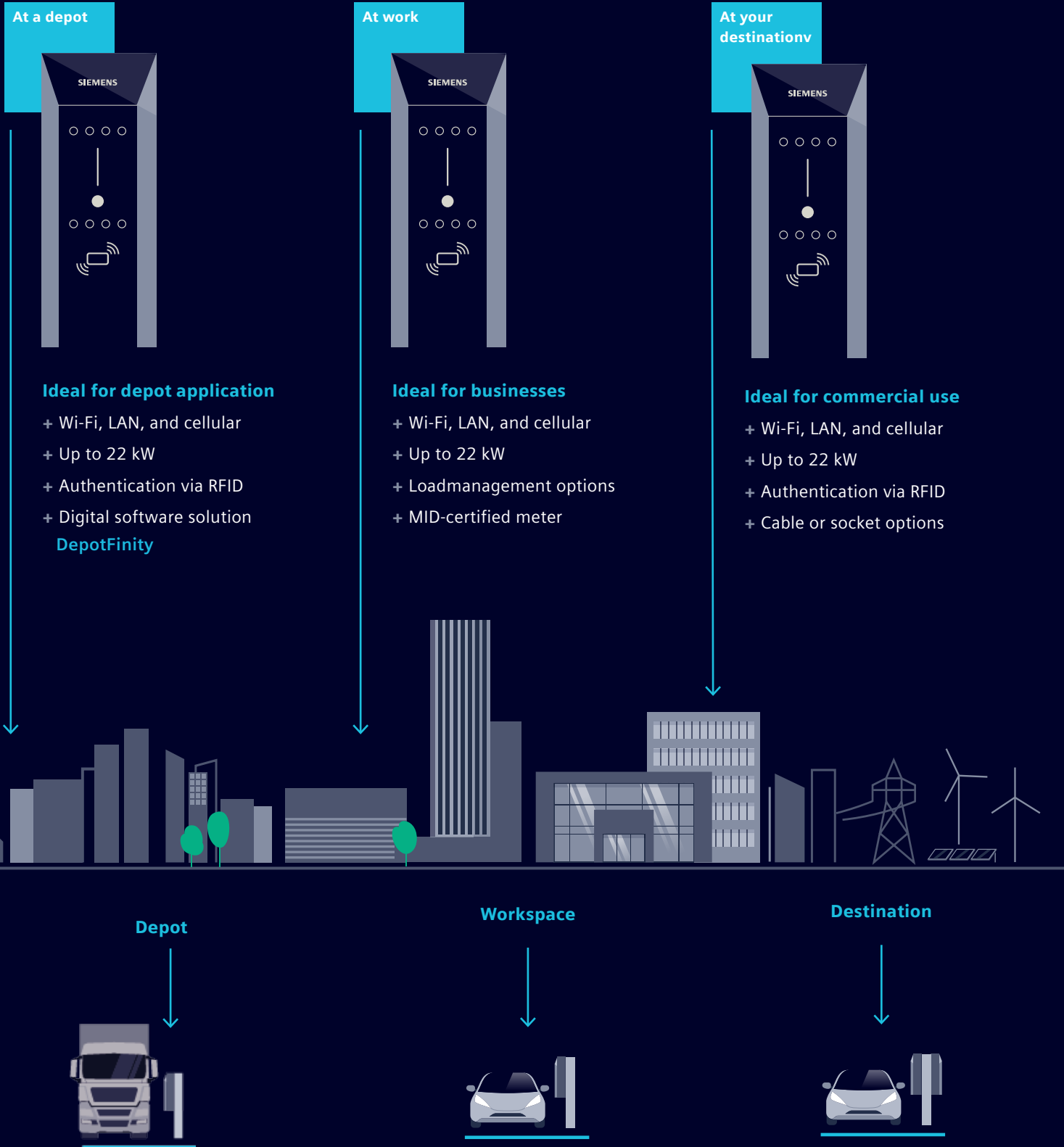


Commercial use

- Workplace and fleet charging
- Parking garage
- Retail and public parking



The right configuration for your needs



Wide range of **opportunities**

Key features

Compatibility with a wide variety of electric vehicles and applicable charging standards – plus ease of use and comfort functions like delayed charging – ensure high levels of customer convenience.



VersiCharge highlights

- Power up to 22 kW (can be reduced to meet regional requirements)
- Graphic LED indicators
- RFID card identification
- Updates over the air
- Mobile app for Apple and Android
- Housing certified in accordance with IP54 and IK10

Options

A variety of options are available for the VersiCharge charging systems*:



Communication via GSM, LTE, and 4G



Fixed Type 2 charging cable as an alternative to the Type 2 charging socket

* See [siemens.com/versicharge](https://www.siemens.com/versicharge) for available combinations

Discover
VersiCharge
in 3D and AR!

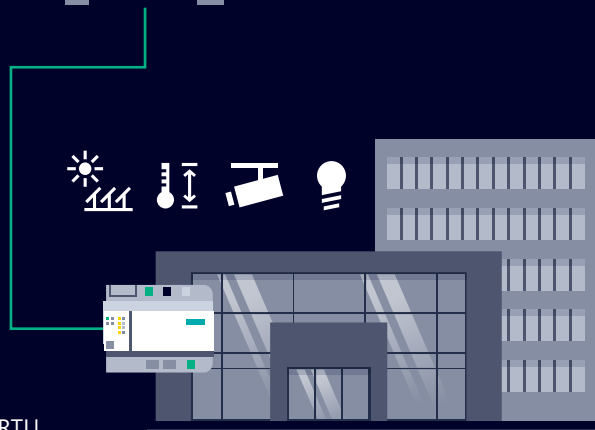
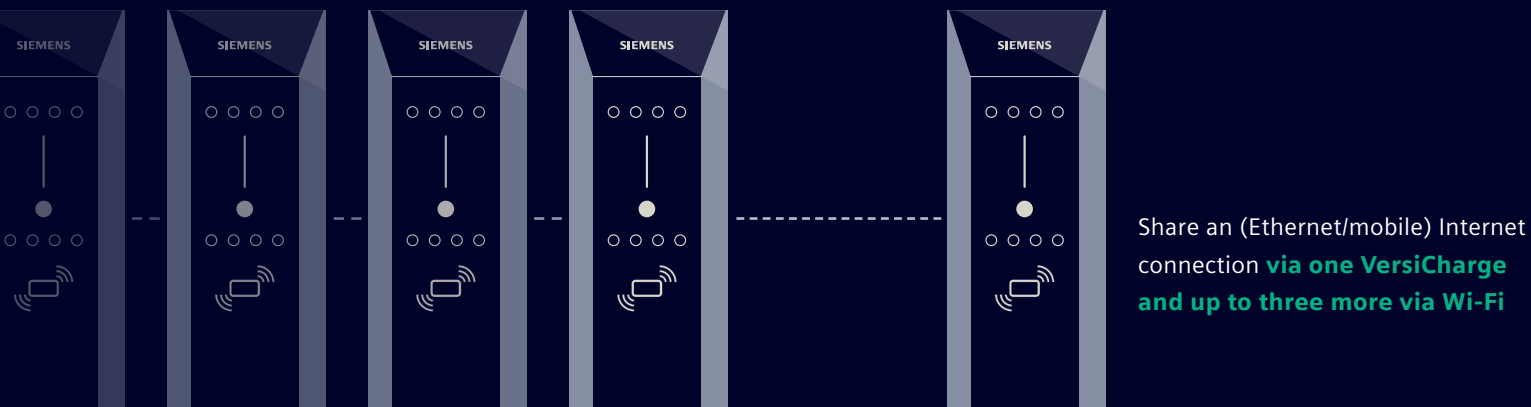
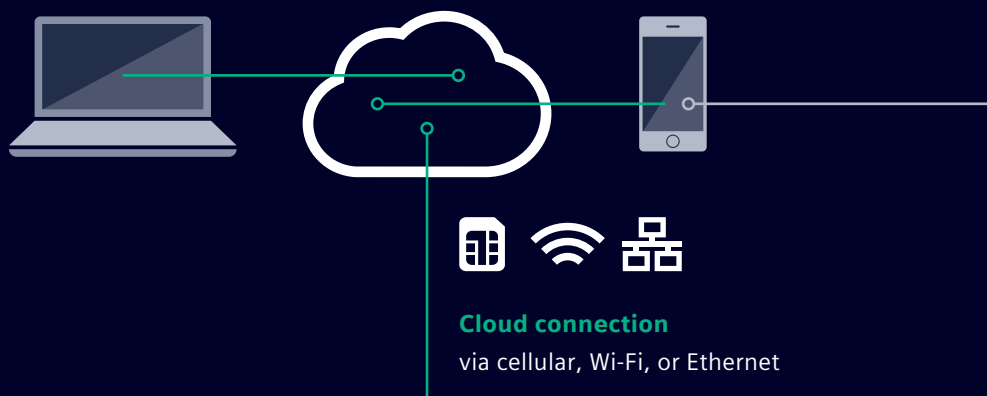


Digital integration in every environment: **Easy, flexible, scalable.**

Smart charging systems with cloud access can do much more than supply vehicles with electricity. To easily implement and expand your options, VersiCharge provides a wide range of communication choices.

Everything communicates securely via the cloud

- + Mobile app for configuration, control, and monitoring
- + Backend connection (OCPP) for payment systems, load management, and access control
- + Managed firmware updates



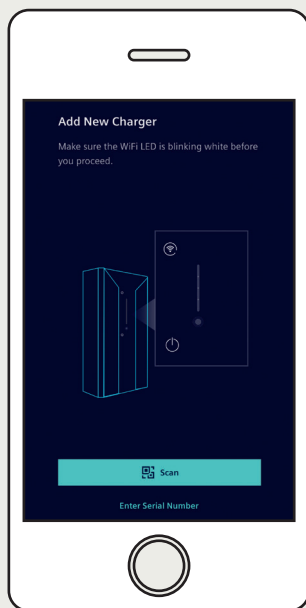
You'll find
all the details
in the
Connectivity
Guide



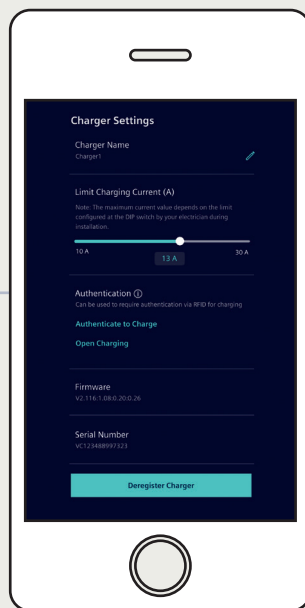
Sifinity Go mobile app



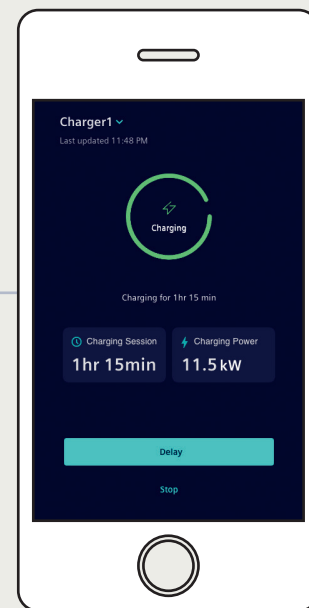
Sifinity Go lets you seamlessly manage your VersiCharge. It allows you to easily onboard single or multiple chargers to your user account via QR code scanning. The home menu gives you information on the charger's status and live session data while also providing control functions like delayed charging. This feature allows you to take advantage of variable electricity tariffs from your energy supplier. The usage menu offers a detailed overview on your past charging sessions on a daily, weekly, monthly, and annual basis. The settings menu also lets you remotely configure charger settings including RFID authentication and the maximum charging current provided by the EV charger.



Seamless configuration of multiple chargers



Adjust charger-related settings

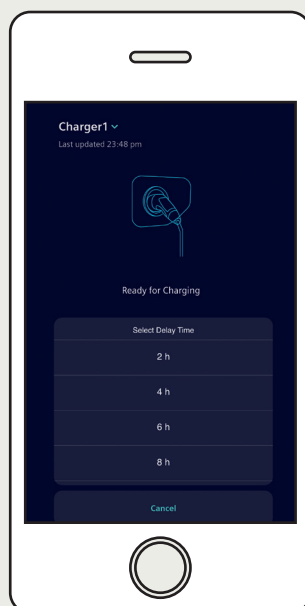


Monitor charging session

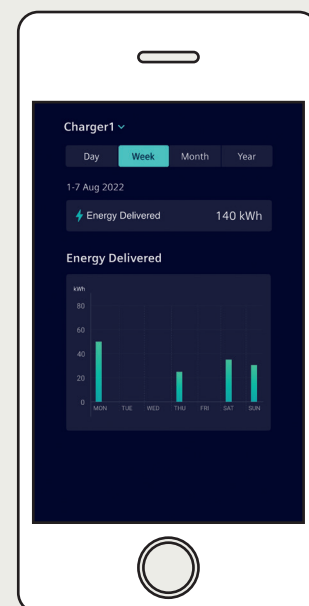
Download for Android from app store



Download for iOS from app store



Delay your charging



Overview of past energy usage

VersiCharge: Benefits for users and operators

Easy to install and set up

- Mobile and desktop apps
- Video tutorials show every step
- Fast and cost-saving



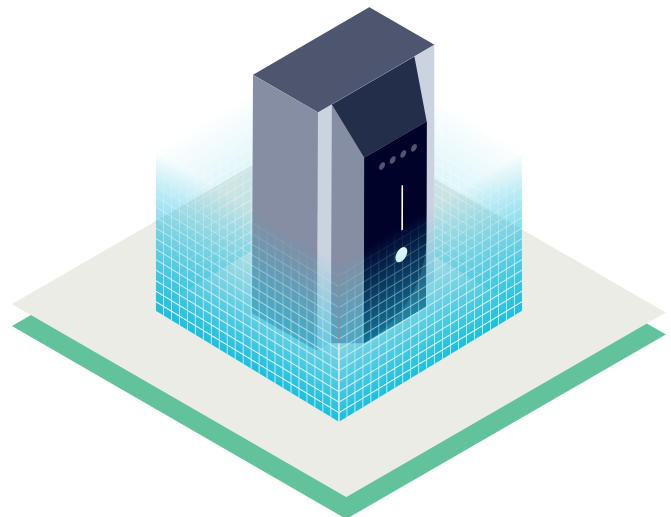
Intuitive operation

- Easy-to-understand LED indicators
- User app for monitoring, control, and reports
- Integrated cable management
- Remote updates that keep your charging system up to date at all times
- Elegant design



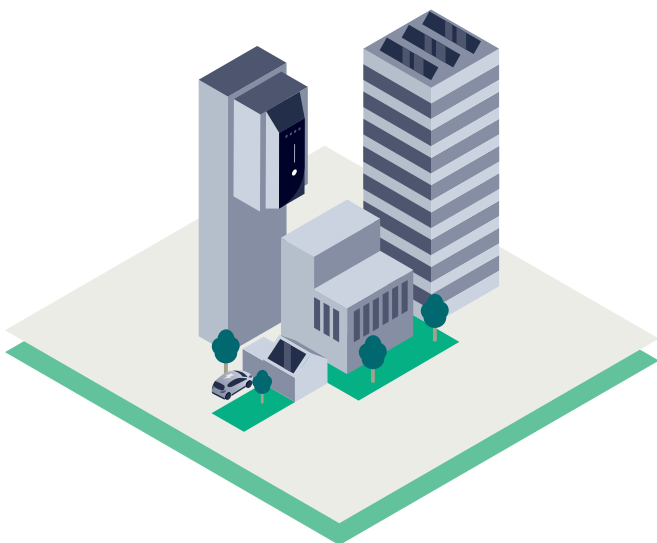
Secure and robust

- DC residual-current detection
- High charging performance up to 22 kW
- Suitable for outdoor use (IP54 and IK10)



Scalable and flexible

- Broad model range with appropriate options
- Power can be limited to meet regional requirements
- Pole or wall mounting
- Many communication options
- Entire system can be remotely monitored and controlled
- Integration in facility management (for example, Desigo CC)



Technical data



VersiCharge wallbox

AC nominal input

Voltage	V	Single-phase: 230 (–20% ... +15%)/three-phase: 230/400 (–20% ... +15%)
Rated current settings	A	10/13/16/20/32
Frequency	Hz	50/60
Network type		TT/TN
Cable cross-section (power cable)		1.5 ... 10 mm ² (depending on the max. current setting)

AC output

Rated power	kW	Single-phase: up to 7.4/three-phase: up to 22
Outlet options		Type 2 socket, 32-A/cable with type 2/32-A coupling
Current of connected cables (max.)	A	32
Cable lengths	m	7

Environmental conditions

Operating environment		Indoor and outdoor
Operating temperature	°C	–30 ... +50 Direct sunlight can influence the operating temperature
Operating altitude	m	2,000 above sea level
Relative humidity	%	5 ... 98 (no condensation)

Mechanical specifications

Enclosure protection		IP54, IK10
Color		Silver metallic (Pantone 10077), Black
Mounting options		Wall and pole mounting
Overall dimensions W x D x H mm		180 x 158/178 x 446
Weight	kg	Models with charging cable 7.8 Models with charging socket 4.3

General specifications

Charging mode		Mode 3
Charging status LEDs		Charging state, time delay, authentication, error codes
Communication/status LEDs		Network connection status, device management status
Shared network access		For shared communication via one VersiCharge and up to three more
User authentication		RFID card (local whitelist, MiFare)
Network connection		Ethernet, Wi-Fi 2.4 GHz, Modbus RS-485, Modbus TCP/IP, optional GSM, LTE, 4G
Configuration		Via Sifinity Go mobile app or VersiCharge Configurator for PC
Electric safety device		Ground-fault monitoring 30 mA AC/6 mA DC, undervoltage, overvoltage, overcurrent +10% above configured threshold, min. +2A/5s, overvoltage category III
Metering options		Integrated MID counter, Class B (± 1%)
Software upgrades		Over-the-air (OTA) software updates
Load management		Via OCPP or Modbus

Norms and standards

Charging standards		HD 60364 series; EN IEC 61851-1; EN IEC 63000; EN IEC 62196-1; EN IEC 62196-2; EN IEC 62955; EN 17186; EN 61000-3-12; EN 300 328; EN 301 893; EN 300 330; EN 301 511; EN 301 908; IEC 62311; EN 50470-1; EN 50470-3
Communication protocol		Compatible with OCPP 1.6J, upgradeable to OCPP 2.0
EMC standards		EN IEC 61851-21-2; EN 61000-3-2/3/11; EN 61000-6-2/3; EN 301 489; EN 55032; EN 55035
Certifications and conformity		REACH, RoHS, CE, WEE

About Siemens eMobility

eMobility is already part of our everyday. And we are committed to anchoring this even more in everybody's daily lives by offering a charging infrastructure that is smart, efficient and innovative – and which makes mobility more sustainable ultimately.

And how do we do this?

By building an ecosystem to tackle the challenges of a complex world together. By cooperating with OEMs, utilities, fleet operators, companies, cities and customers alike – while bringing in the sound knowledge in energy supply, grids, mobility and buildings from a technology company that has been transforming the everyday for a 175 years. By connecting the real and the digital worlds with our IoT-enabled hardware, software solutions and service offerings that help customers and users save time, resources and costs.

And finally, with innovations like wireless or megawatt charging providing solutions for the challenges ahead. Our portfolio is designed for every use case in almost every region of the world – at work, at bus stations, or within company depots.

To make a long story short: by electrifying mobility and making it more sustainable, we transform the everyday for a better tomorrow.

[siemens.com/emobility](https://www.siemens.com/emobility)

Published by Siemens AG

Smart Infrastructure
eMobility
Siemenspromenade 10
91058 Erlangen
Germany

Article No. SIDS-B10056-02-7600
TH S28-230070 BR 0323

© Siemens 2024

Status 04/2024

Subject to changes and errors. The information given in this document only contains general descriptions and/or performance features which may not always specifically reflect those described, or which may undergo modification in the course of further development of the products. The requested performance features are binding only when they are expressly agreed upon in the concluded contract.

All product designations may be trademarks or other rights of Siemens AG, its affiliated companies or other companies whose use by third parties for their own purposes could violate the rights of the respective owner.

